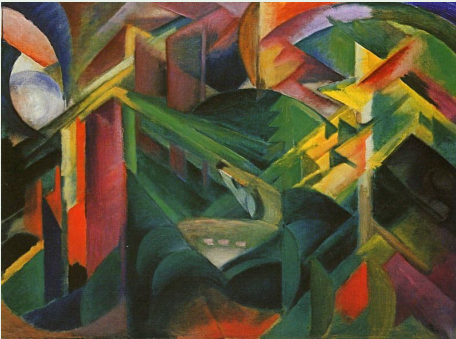


***EASTERING:***  
***Making the Invisible Visible***  
***thru “Soul Collage”***  
***April 20-21, 2012***



**Presented by Carla Peterson**

Begins with 7:00 p.m. supper Friday and concludes Saturday at 4:30 p.m.

Offering: \$100.00.

May stay overnight Saturday and Sunday breakfast.

Offering: \$140.00.

Sometimes, like the Emmaus disciples, we don't recognize the Risen Christ— until a word, a gesture or a simple act floods us with recognition and delight. We discover Jesus with us, right here, and how that changes us! This retreat invites us to spend sacred time focusing on the “eastering” going on inside us and among us as we create “Soul Collage” cards, listen to one another and engage in prayerful reflection. “Soul Collage” is an intuitive, imaginative process of artfully combining images we find to create small 5x8 cards which facilitate prayer, reflection and journaling. Presenter: Carla Peterson is a trained Soul Collage facilitator and spiritual director. She is also a licensed professional counselor in Eau Claire. She lives with her husband in rural Chippewa Falls.

**Reservations:**

St. Anthony Spirituality Center  
300 East Fourth Street Marathon, WI 54448  
Phone: 715- 443-2236 Fax: 715-443-2235  
E-Mail: [info@sarcenter.com](mailto:info@sarcenter.com)  
Web-Site: [www.sarcenter.com](http://www.sarcenter.com)